



**Documentation FIS2000**  
**Base Release 2021.01**

---

---

# Table of contents

**TABLE OF CONTENTS ..... 2**

**INTRODUCTION ..... 3**

**NEW IN RELEASE 2021.01 ..... 4**

**TECHNICAL ENHANCEMENTS ..... 5**

**FUNCTIONAL ENHANCEMENTS ..... 7**

    RELEASE ..... 7

**CHANGES IN MENU OPTIONS ..... 10**

    RELEASE ..... 10

**CONNECTING WITH OTHER APPLICATIONS ..... 10**

**SOLVED ERROR MESSAGES ..... 11**


    RELEASE ..... 11

**SUPPORT ..... 13**

---


## Introduction

This document can be regarded as a guide for e.g. the application manager when implementing release 2021.01 of FIS2000 within the organisation.

 *With version 2021.01 of FIS2000 Pantheon also releases a 2021 version of all related software products, like e-Mapping, FAC, Spoolfile Manager and Billing (FAK). When you move to FIS2000 release 2021.01, you need to install the 2021 version of all software you are using - download from <https://portaal.pantheon-automatisering.nl/>*

Please be aware of the following conditions and effects:

- During the installation of this release the entire FIS2000 program library (standard name: FISOBJLIB) will be cleared and replaced. Objects you may have added after a previous installation, will be lost in the process
- If your current version of FIS2000 is older than version 2016.01, you must load release 2016.01 or 2019.01 first and modify your data library (libraries). Then move to version 2021.01; if you have any questions on this procedure, please contact Pantheon support
- All payment and collection proposals, as well as draft, cheque and TAX proposals must be completed (including Pay Definitely / Definitely Collect) before installing release 2021.01
- Install the Easy@ccess Basepack (version **8.5.1**) as supplied with this release; it contains the latest additions for Pantheon software
- Always install the Easy @ccess panels provided, both the general (in '/Panels/Shared Files') as the FIS2000-specific panels (in '/Panels/FIS2000'). The online help text is loaded automatically
- Users of the Online Approval module need to install the version provided with this release, version **2021.01.00**, as well as the most recent Webviewer, available on the Portal
- After installing this release, you will have to run the 'Modify file library for new Release/PTF' procedure for every FIS2000 data library on your system. During this process, the posting files will NOT be converted

 *We strongly recommend testing new software in a separate environment, especially if you use custom built software or third-party applications connected with FIS2000.*

## New in release 2021.01

In short, the most important features and improvements in this release; additions information can be found in 'Functional Enhancements':

### Search for double payments / double invoices / check Cr-master data

Release 2021.01 contains several new options to retrieve invoices that may have been paid twice or invoices that may have entered in the application twice

### Generic search in 'Db/Cr Screen information'

Release 2021.01 introduces 'generic search' in Db/Cr screen information. It is no longer needed to indicate the type of data you want to use (address data, postal code, bank account); just enter your search word and FIS uses all data available to retrieve the corresponding master data

### Find (and remove) master data you no longer need

No doubt, your financial master data (Accounts, Cost centres, Cost Units, Statistical numbers) contains item you no longer use. FIS now contains an option to retrieve master data you have not used in the current year. You can use this information to remove unused data before opening a new financial year. It also offers the possibility to remove this data by using an import file.

### Period table for financial transactions

The use of a period table allows you to control the posting date used in financial transactions. When you specify a date interval for each posting period, only dates within that interval are accepted in financial transactions.

### Reorganise master files

This function now offers the possibility to 'remove deleted master data only'. This procedure can be performed while FIS is being used by other users.

### Store personal defaults

The option to store your personal defaults was introduced in a few more functions. In other functions, FIS fills the screen with the selections you used the last time you used it.

### Multiple foreign bank accounts for Creditors

FIS can now handle up to 99 foreign bank accounts for creditors. This allows you to pay creditors (most likely outside the Euro zone) into an preferred bank account for different currencies.

### Update timestamp in bank account master data (Domestic & Foreign)

When bank data is modified, FIS stores date, time and user of the update in the master data itself.

## Technical enhancements

### File changes in the database

In this release the following data files in the FIS2000 data library were altered:

DCAPSB	Db/Cr bank master data (Domestic)
DCTS	Db/Cr bank master data (Foreign)
DCT	Db/Cr bank master data (Foreign) (Logical)
DCT51	Db/Cr bank master data (Foreign) (Logical)
FAGPPT	Period table

### Transfer to a new operating system

For Release 2021.01 of FIS2000 (and all its PTF's) version **V7R2M0** of the IBM Operating system is required; it is not possible to install FIS20000 software on V6-servers. This condition is checked during the installation process.

If you have questions on this subject, please contact Pantheon Automatisering. Call +31 513 657 357, or send a mail to [support@pantheon-automatisering.nl](mailto:support@pantheon-automatisering.nl)

### Upgrade Lega Suite software

You need to install new software from Legasuite: Basepack 8.5.1. Please refer to the release documentation (and loading instructions) for additional information.

Note: install the Easy@ccess panels from this PTF – panel sets always contain all panels. Remember that panels are distributed in two files: general panels (in '/Panels/Shared Files') and FIS2000 panels (in '/Panels/FIS2000').

Also check the version of the Seagull License Manager (LMS) – you will find all details in the loading instructions. If an update is required, the software can be downloaded from the customer portal.

### Select your browser for the HTML Help texts

In FIS2000 function key <F1> triggers the Help function which displays help text in a browser.

When Microsoft Edge is selected as your standard browser, this presents a problem. The Edge technique does not support the HTML method of displaying text; the Edge browser is started, but the text is not displayed.

You can solve this problem by using an alternative browser. Refer to your settings in the **defaults.ini** file (standard settings) or **custom.ini** file (your own settings) to indicate your browser of choice using the **BrowserHelp** keyword in the section [HELP]

The options are:

BrowserHelp="1" (Chrome)

BrowserHelp="2" (Internet Explorer)

BrowserHelp="4" (FireFox)

N.B.: BrowserHelp="3" (Edge) can not be used

Example:

[HELP]

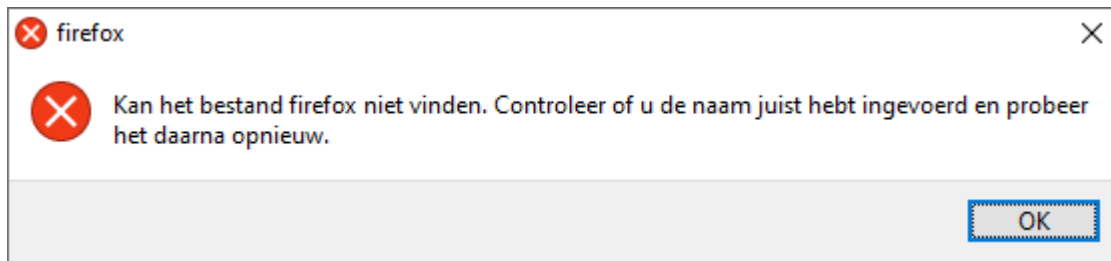
HelpSystem="HTML"

HelpFolderWindows="C:\Easy @ccess\app\"

HelpFolderJava="<webserverpad>/"

BrowserHelp="4"

If the selected browser is not installed on your pc/laptop, the following message is displayed:



## Functional enhancements

### Release

#### Search for double payments, double invoices; check master data

Release 2021.01 contains new investigative functions designed to retrieve invoices that may have been entered in FIS twice and/or payments that may have been done more than once.

The 2021.01 base release contains reports for:

##### *Checks on bank master data*

Which creditors have more than one bank account in their master data? Does a specific bank account number appear with more than one creditor?

##### *Warnings on payments*

Have payments been made to bank accounts that no longer exist in the FIS master data? Has a bank account number been changed after a payment was made? Have invoices been paid to more than one bank account?

##### *Warnings on payment characteristics*

Does FIS contains invoices for one creditor with identical payment characteristics? Or can invoices be found with similar payment characteristics?

##### *Search invoices by selected elements*

This option collects all invoices of a creditor and compares them on selected elements. This offers the possibility, for example, to retrieve invoices from one creditor, for the same amount, in the same financial period with the same posting date.

The following items can be used to group invoices of one creditor:

- Amount
- Number
- Posting period
- Day book
- Item number
- Invoice date
- Due date
- Payment characteristics
- Payment reference

### Archive financial transaction

As from release 2019.01 (PTF002) FIS contains an automatic archive for financial transactions. After processing, financial transactions are placed in an archive and stay there for a minimum of 15 days. This period can be enlarged by the application manager.

The data in the archive can be used to easily generate new financial transactions, when required.

In release 2021.01 extra safety measures were added for FIS environments where 'processing financial transactions' is executed very frequently or in case a longer storage period is chosen.

- ☛ *There is a technical limit to the archive; the details of up to 32,700 so-called "User-identifications" can be stored. If this number is reached, the oldest transactions are removed automatically to allow storage of the latest transactions*

### Generic search in DB/CR screen information

In most cases users start by selecting a debtor or creditor. These relations can be found through a number of search functions, each intended for a specific data element – like number, search-item, bank account or name/address.

Release 2021.01 offers a new generic search so you no longer need to specify the data element you want to use for your search action; just enter your search word and FIS performs a search action on all search items in the master data.

### Remove unused master data

In most cases the financial master data (Accounts, Cost centres, Cost Units etc.) is duplicated at the end of each year. Master data you have not used in the current year is included automatically, so your master data may contain a certain amount of information that you do not need.

Release 2021.01 offers a new function to retrieve unused master data. Initially it consists of a report; you can remove this data manually, but FIS can also perform these actions for you.

The reporting software also allows you to generate a result file with unused items. You can use one of the 'batch-input' functions on menu 'Financial – Batch input' to actually remove the master data you do not need. Obviously, you can view and modify the data in the result file beforehand.

### Increase availability of FIS2000

A number of tasks in FIS2000 can only run when no users are active in the application, like 'Physically reorganise master files'. For release 2021.01 these tasks were reviewed in order to increase the availability of FIS.

When an account is deleted in FIS, it is not actually removed from the file but set to 'inactive'. The account number concerned cannot directly be reused for another purpose; inactive elements need to be removed first when you want to use the account numbers again.

These actions are part of 'Physically reorganise master files' and can only be performed when FIS users (or any other tasks) are not using the application.



For this reason, in 'Physically reorganise master files' a new option has been added: 'Perform deletions only'. This allows you to actually remove inactive numbers, while users are working in the application.

A similar modification was made to the option 'Rebuild cumulatives'. You can rebuild specific 'cumulatives' while users are active. Please note that some specific functions (like Screen information postings and most reports on the menu 'Financial - fixed overviews') are not available while the rebuild is performed.

### Period table for financial transactions

As standard there is no link between the posting year and period (daybook elements) and the posting dates used in financial transactions. The posting date just needs to be valid and you can only activate an informational message on screen when a posting date is not within your limits.

If you desire more control, you can now work with period tables. In a period table (up to 9 tables can be defined) you can specify the exact date interval that is valid for each posting period. Then link the period table to the day book master data and posting dates outside the specified interval are regarded as errors. This applies to all financial transactions, regardless of their origin (entered manually, imported, generated etc.)

### Store personal defaults

In this release more FIS functions allow you to store personal settings; on other functions the user input is saved and represented the next time you select the option.

- Change Reconciliation – the selection for transactions (traced, probably traced or not traced) is saved and applied again when the user starts this option
- Transfer external financial transactions: all input fields are saved and shown on next selection
- Batch-input debtors/creditors/accounts: all input fields are saved and shown on next selection

### Timestamp & User of last update stored in bank master data

In the maintenance programs for bank master data (Debtors and Creditors; both foreign and domestic) FIS now stores who (User profile) made the most recent modification and when this occurred.

These data are stored in the master data itself, so this information is available in export functions like e-Transaction en e-Mapping.

### Multiple foreign bank accounts per Creditor

As from this release, up to 99 foreign bank accounts can be stored in the creditor master data. If you need to pay suppliers in multiple currency, you can now define separate bank accounts for each currency. In that case, indicate the bank account you wish to pay to, when you enter the invoice in FIS2000.



*Only one bank account can be selected for each invoice. It is not possible to pay an invoice into multiple (foreign) bank accounts*

## Changes in menu options

### Release

#### **FISOND2 Financial - maintenance master data (2)**

- Overview of inactive master data New
- Work with inactive master data New
- Maintenance period table - financial New

#### **FISDCA3 Debtors – Creditors (3)**

- Analyse CR master data / invoices / payments New

## Connecting with other applications

All changes described so far, may affect connections with other applications on your PowerSystem. All existing interfaces are supported; in most cases new fields have been added at the end of parameter strings.

Additional information and more technical details are available in the handbook Interfaces in the Online Help text.



- FIS2000 release 2021.01 can also be connected to other Pantheon applications. Together with FIS2000 a 2021.01 release for all FIS related applications has become available. If you upgrade one of these applications to the 2021.01 level, you need to install the 2021.01 release of all other products as well.

If you have any questions regarding connections with FIS2000, please contact Pantheon Automatisering. For up-to-date information; go to <https://pantheon-automatisering.nl>

## Solved error messages

In the list below, you can find all messages that have been solved for the corresponding release. The support-ID or internal R&D number is assigned to each of these messages.

### Release

Menu option	Number	Description
Definite payment / collection	ACC122	Authorisations on the payment file (in IFS) are copied from the IFS location; An error was corrected in the SHA-calculation for foreign payments
Pay definitely (Foreign)	ACC125	Improved handling of Clearing codes
Pay definitely (Domestic)	ACC130	The maximum amount to be paid was not always applied correctly in the payment process
Export invoices in approve	ACC132	The export now contains additional information about the invoice
Pay definitely (WRLD)	EWL79	For WRLD-payments through a Belgian bank the amounts paid were not always correct
Print annual VAT-list	ESP-16	Negative turnover/VAT (due to corrections) was not included on the overview/ in the XML-export
Screen information Db/Cr	ITG8	When an invoice is blocked for payment, this is now also shown on the invoice detail screen
Online Approval	SBR6	Notes linked to historic invoices were not always visible in Online Approval
Control report financial transactions	SLG355	Under circumstances, the check for unique payment characteristics and/or payment reference (per DC-nr) would not work
Reconciliation – Tick Off	191003	The processing of CAMT-information would end in error when the currency date was absent
FIS General	2101	General project release 2021.01
Analysis CR master data, invoices and payments	210001	(New) Specific analysis to retrieve or prevent invoices from being entered (or paid) twice
XML Audit files	210002	After modification of the software, FIS can now generate audit files larger than 2 Gb

<b>Menu option</b>	<b>Number</b>	<b>Description</b>
Change Reconciliation; Transfer external financial transactions; Batch-input debtors/creditors/accounts	210003	New options to store personal settings; on starting the option, previous selections are shown as default
Screen information postings	210004	The export to CSV was limited to 9.999 lines; this restriction no longer applies
Select sub-ledger lists	210005	You can now start the maintenance function, directly from the selection
Screen information Db/Cr	210006	Generic search in Db/Cr master data; search actions can be applied using all search items in one go
Retrieve/remove inactive master data	210007	(new) Overview of master data that was not used since a specific data; including the possibility to remove these data using batch-input options
Modify file library for new release/PTF	210008	File conversion 2101.01 – update and set starting value to 2016.01
Automatic payments (Foreign)	210009	(new) In the creditor master data you can now enter multiple foreign bank accounts
Physically reorganise master files & Rebuild cumulatives	210010	Increased availability; functions can now be used while the FIS application is in use
Prepare document in folder based on layout	210011	When ‘long description of master data’ was selected in the definition, the export still contained the regular description
Maintain chart data	210012	Under specific conditions, modifications in ‘VAT / discount data’ were not stored correctly in the database
Approve modifications DB/CR master data	210013	Approval of remove actions using import file DCA240IM (Inactive Db/Cr) was not possible
Input financial transactions; Maintain day books; Maintenance period table	210014	(new) Introduction of the period table for financial transactions
Create settlement proposal; Work with settlement proposal	210015	Extended authorizations are now available
Db/Cr Bank master data (Domestic & Foreign)	210016	Timestamp and User ID from the most recent update action are now stored in the master data

---

<b>Menu option</b>	<b>Number</b>	<b>Description</b>
Online Approval	913016	The process of 'Create financial transactions from codings' can now be used simultaneously by multiple users
Work with reconciliation files	913017	The overview screen now shows the description of the bank in question, instead of a file description

## Support

- In order to guarantee the continuity of your applications, Pantheon Automatisering offers various types of support. What to do if you want to use these services?
- For a problem involving Pantheon standard applications, please contact the Support Desk by mail: [support@pantheon-automatisering.nl](mailto:support@pantheon-automatisering.nl). A concise problem description is sufficient for the Service Desk to tackle the problem (within opening hours).
- For support during the installation and/or implementation of Pantheon applications you need to make a reservation; please contact us 14 days in advance. This type of support can be given at any time (during/after business hours), on location or by phone. For these services fixed tariffs apply.

You can reach Pantheon by phone: **+31 513 657 357**

You can also use this number, should you require additional information on other types of support, such as training and advice.